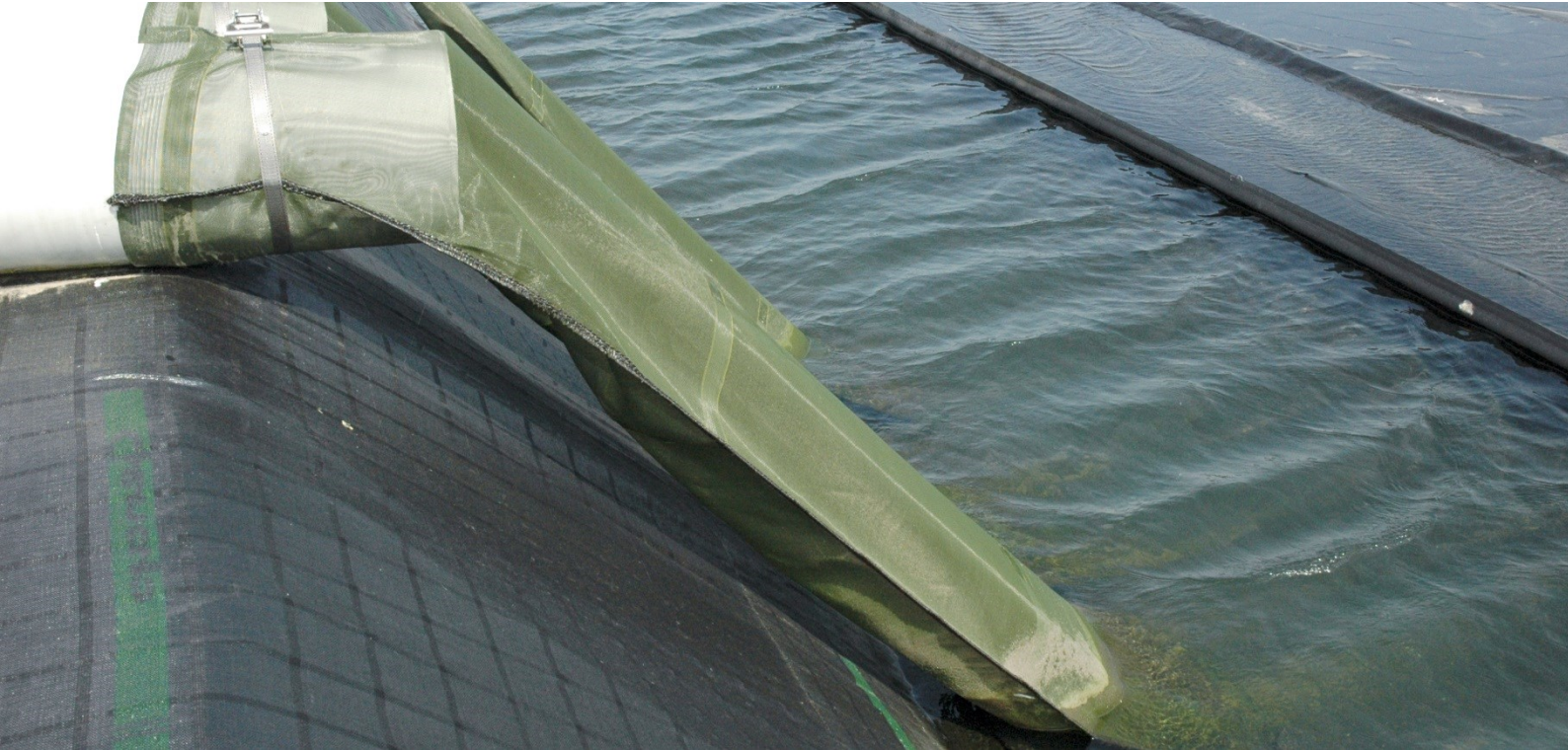


Water inlet hose



Water inlet hose

The water inlet hose provides a controlled inlet of water to a reservoir or silo; the water is transported to the water surface by means of a flexible hose, which is connected at the end of the inlet pipe. Water inlet hoses are preferably recommended on pipe inlet systems which are located on top of the crown in reservoirs and on top of the silo edge in silo water storage systems in combination with a floating cover.

The water inlet hose provides that water and especially filth / dirt is not dumped and spread directly upon the floating cover, which decrease accelerated accumulation of dirt and ballast on the cover. The hoses are made of a woven fabric (Genafil) and have a facility at the bottom side to ballast the hose in order to keep in position; de hoses can be delivered for different standard pipe dimensions and include an installation set.